



MIDDLEHURST SITE EXPANSION

CONSULTATION SEPTEMBER 2022

(SEPTEMBER 2023 UPDATE)





"We like to teach the way you like to learn"

describes our school perfectly. It is everything we aspire to, so that our pupils feel happy to come to our fantastic modern facilities and feel comfortable to learn“.

-Jonathon May, Executive Headteacher



Expanding Watermill School

- Where?

Middlehurst School has stayed in our thoughts since we left in 2012 to join Heathfield School to form Watermill School . We are very excited to be given the opportunity to return to the site in a new, modern, fit for purpose school building.

The Middlehurst site is ideally located just up the road from us on Turnhurst Road.



Expanding Watermill School

- **How?**

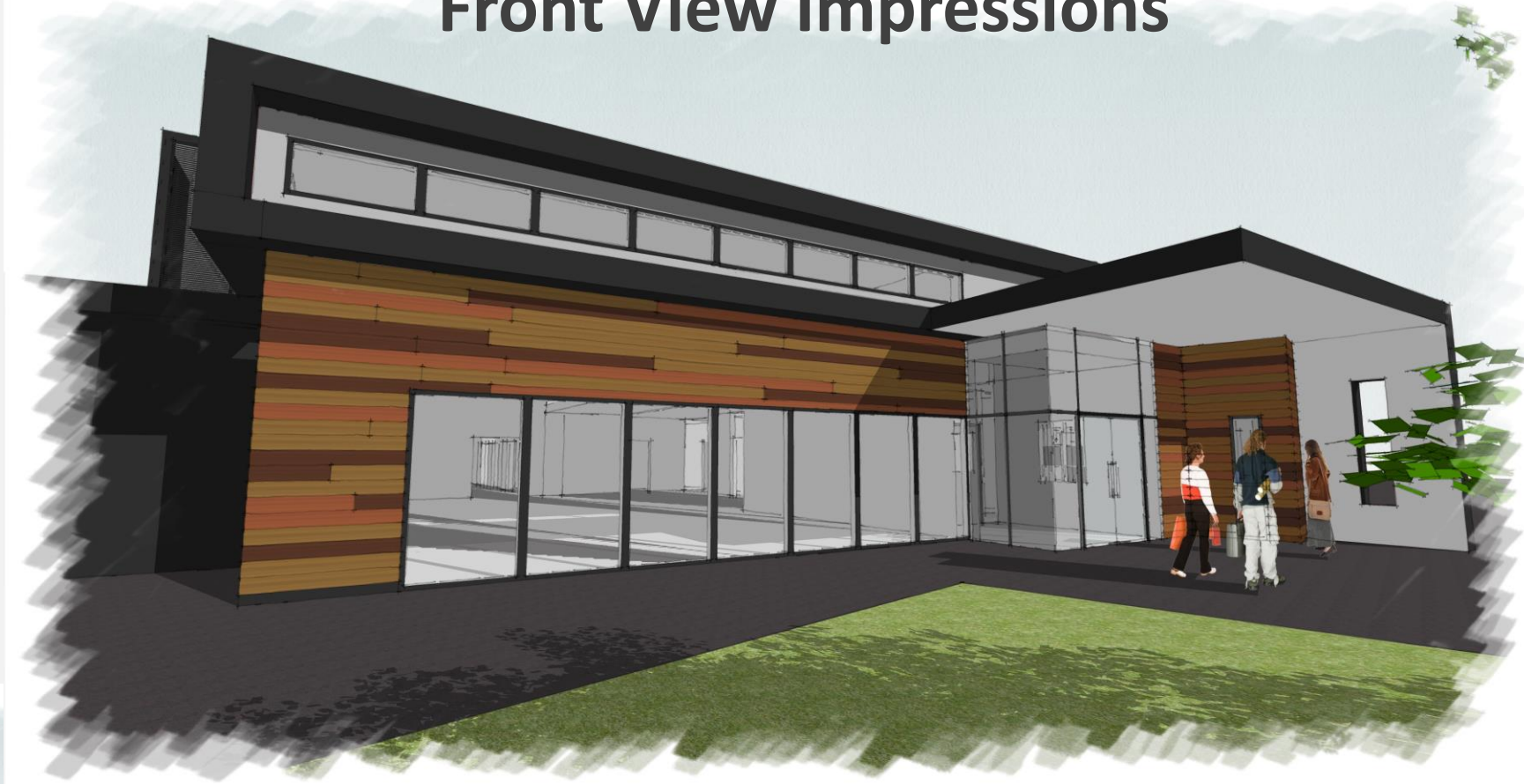
We are working closely with the Local Authority and its partners to create a school environment that meets the needs of our students not only now but also in the future.

We have collaboratively developed a school containing 9 classrooms, 4 specialist rooms, a fitness suite, sports hall, performance area, cafeteria, MUGA, playground and playing field.

The school will offer 82 places.



Front View Impressions



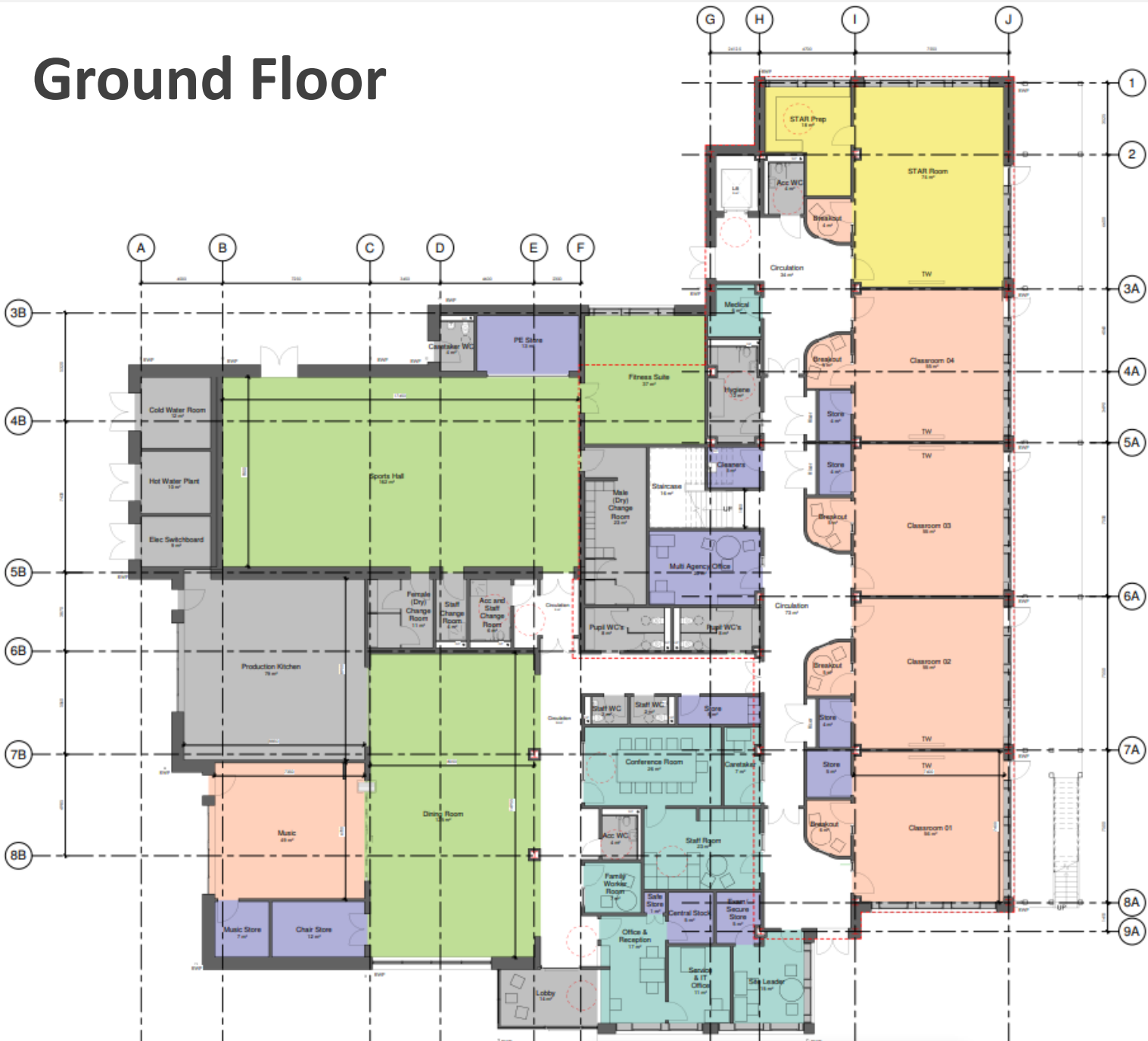
Colour scheme/design TBC

Rear View Impressions

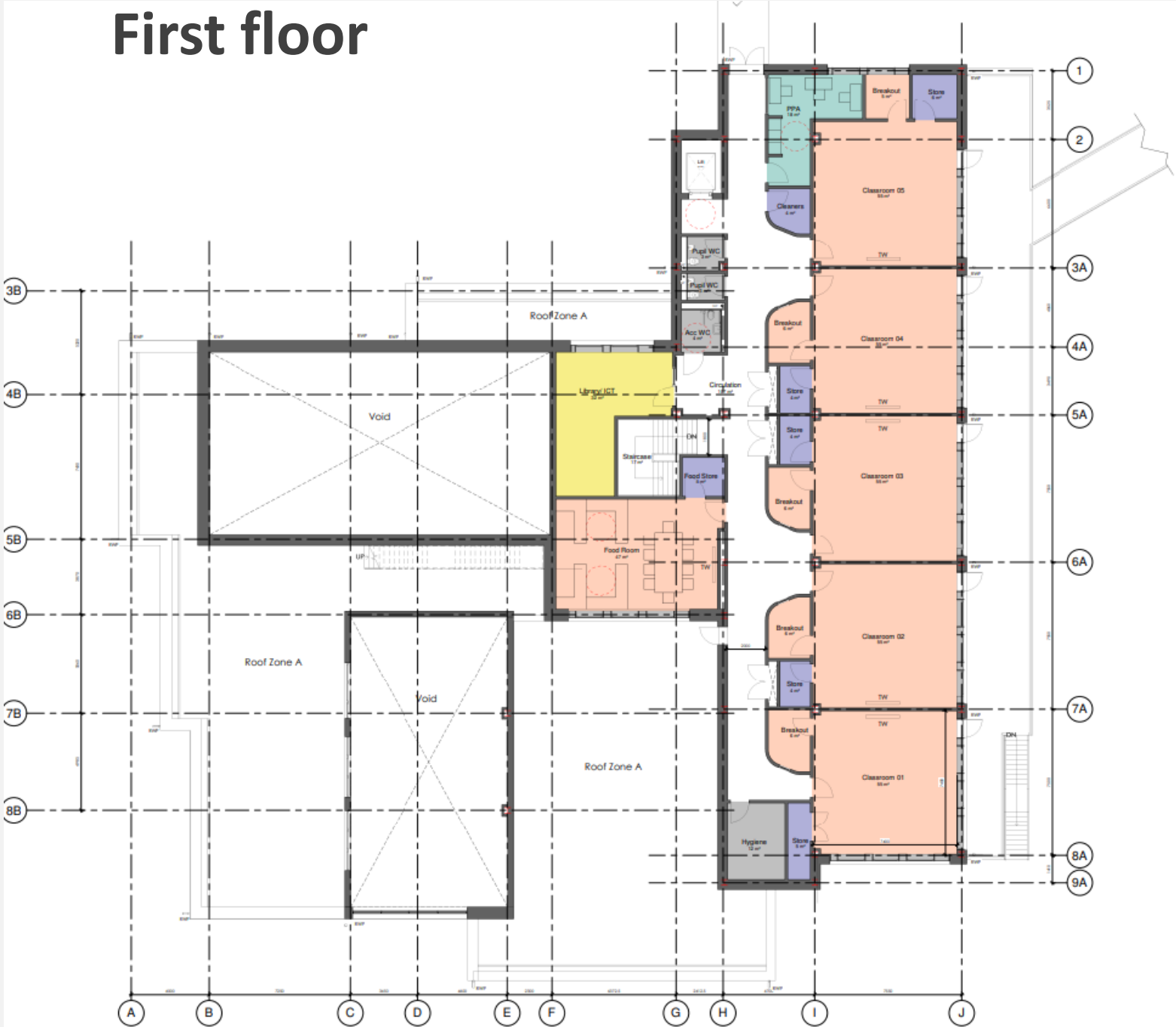


Colour scheme/design TBC

Ground Floor



First floor



Expanding Watermill School

- When?

The new Middlehurst site is due to become part of the Watermill School and Orchard Community Trust family in the **Autumn term 2024**.

The school will gradually admit pupils throughout the school year until we reach full capacity at 82 pupils.



What this means for our Students

- The Watermill site will focus on delivering quality care and education for our younger students and also our students with more complex needs.
- The Middlehurst site will focus on meeting the needs of our students in KS2-4 with moderate learning difficulties.
- Students will access the site which is best suited to meet their needs.
- Students have access to facilities and resources at both sites as together we form **One Watermill School** (Watermill and Middlehurst sites).





QUESTIONS